

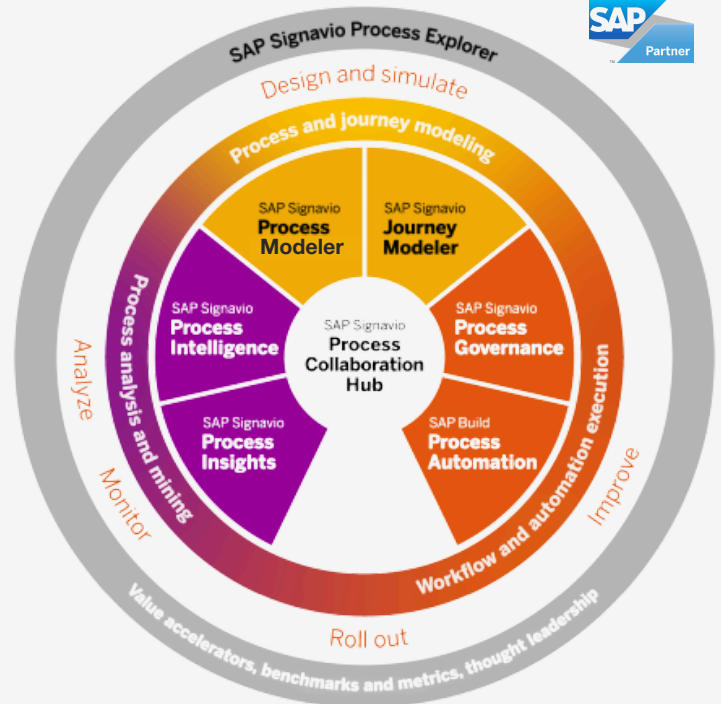
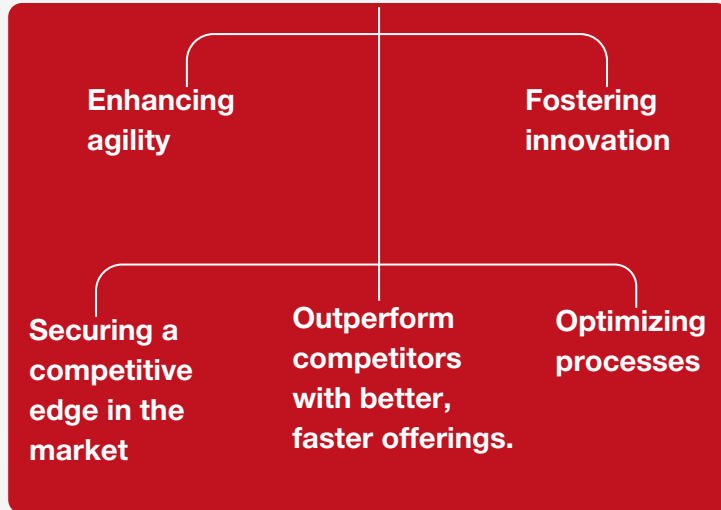
BaseEdge - Business Process Transformation

Innovate. Connect. Elevate.

freedom
CONSULTING

Overview

SAP Signavio is a cloud Business Process Management platform for visualizing, analyzing, and improving business processes, ensuring compliance and team collaboration.



Freedom's Packaged Solution for SAP Business Process Transformation

Process Discovery and Visualization

- Identify and map existing business processes.
- Visualize end-to-end business processes.
- **Signavio Process Manager & Collaboration Hub**

Process Analysis and Optimization

- Identify inefficiencies and areas of improvement
- Measure performance metrics
- **Signavio Process Intelligence**

Compliance and Risk Management

- Ensures adherence to regulations and industry standards
- Compliance checks, audit trails, and compliance reporting
- **Signavio Process Manager & Collaboration Hub**

Single source of truth for Business Processes

- Mitigate issue of multiple versions or scattered documentation
- Same information across departments and teams
- **Signavio Process Manager & Collaboration Hub**

Process monitoring and reporting

- Track key process metrics such as cycle time and throughput
- Real-time monitoring and reporting of process performance
- **Signavio Process Insights | Signavio Process Intelligence**

Collaboration and Version Control

- Share insights, provide feedback, and align efforts
- Facilitate effective communication and teamwork
- **Signavio Process Manager & Collaboration Hub**

freedom
CONSULTING
BENEFITS

SIGNAVIO PROCESS - AN OVERVIEW

SIGNAVIO PROCESS MANAGER & COLLABORATION HUB SAP CLOUD ERP (PUBLIC/ PRIVATE)

Standardizes modeling, centralizes governance, boosts cross-team collaboration, and ensures compliance.

SIGNAVIO PROCESS INTELLIGENCE SAP CLOUD ERP (PUBLIC/ PRIVATE)

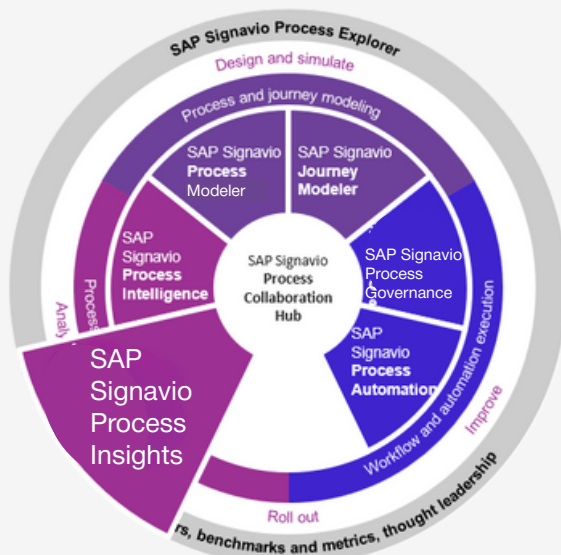
Enables data-driven insights, system-wide diagnostics, continuous tracking, and predictive issue resolution.

SIGNAVIO PROCESS INSIGHTS SAP CLOUD ERP (PRIVATE)

Delivers real-time analysis, detects inefficiencies, improves KPIs, and boosts process transparency.



BASE EDGE PACKAGE OFFERINGS



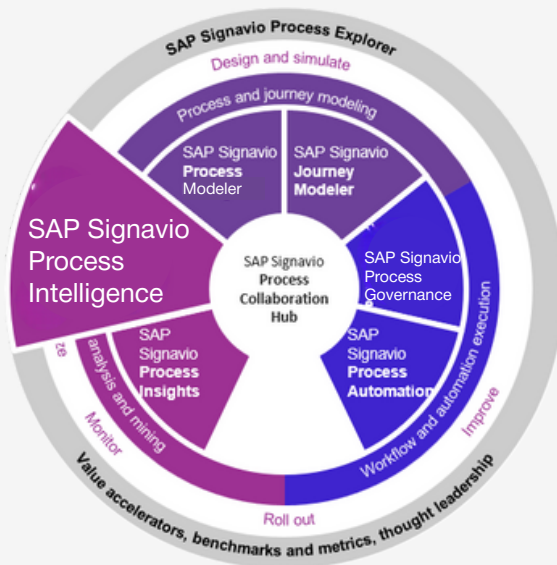
FOR PROCESS PERFORMANCE ANALYSIS

- Package: Insights Discovery (Process Insights)
- Ideal for: SAP ECC / S4HANA customers wanting quick KPI baselines

Key deliverables (fixed scope):

- SAP connector set-up for 1 productive system
- 50 + process performance KPIs & hotspots dashboard
- Action catalogue with top 10 fixes

Duration*
3-4 weeks



MINING ACCELERATOR (PROCESS INTELLIGENCE)

Ideal for: Orgs seeking deep variant analysis & automation signals

Key deliverables (fixed scope):

- Event log extraction framework (1 process, ≤ 20 m events)
- Variant explorer & bottleneck heat map
- Upskill workshop on query language & dashboards

Duration*
6-8 weeks



FOR KICKSTARTING INTO PROCESS MANAGEMENT

Ideal for: Existing customers with a Starter pack license, intending to explore Signavio

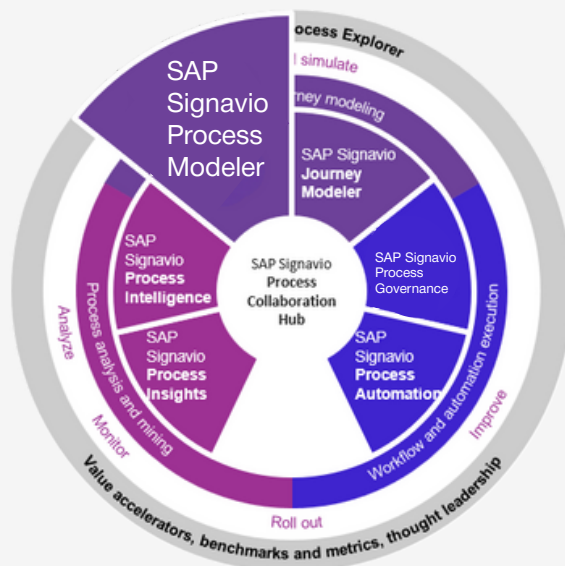
Key deliverables (fixed scope):

- Connect 1 productive SAP system
- KPI & hotspot dashboard
- Stakeholder walk-through & publication
- Import SAP best-practice flows
- Capture 2 priority E2E processes in BPMN 2.0

Duration*
3-4 weeks

*Software licences sold separately. Signavio Process Insights is licensed per SAP source system, Process Manager by named modeller, Process Intelligence by event volume.

*All prices exclude GST. Subject to a formal Statement of Work.



MODEL-FIRST BPM (PROCESS MODELER)

Ideal for: Teams new to structured BPM

Key deliverables (fixed scope):

- 100 Business Processes captured in BPMN 2.0
- RACI + risk annotations
- Governance workflow & publishing portal

Duration*
4-6 weeks

LEANIX FOUNDATION PACK

Ideal for: Organisations new to LeanIX that need a clean application baseline and executive-ready visualisations —fast.

Key deliverables (fixed scope):

- App inventory & tagging (≤ 100 apps)
- 2-h EA maturity workshop
- Executive dashboard template

Duration*
3-4 weeks



*Licences sold separately; LeanIX charges per application and offers tiered pricing. *All prices exclude GST. Subject to formal Statement of Work.

- Headquarters** (Singapore)
- Global Competency Center** (India)
- Regional Transformation Offices**
(Japan, Australia, and Malaysia)
- Upcoming Offices** (Thailand and Indonesia)



JAPAN
Isai Akasaka 5-2-33
Akasaka, Minato-ku,
Tokyo 107-0052

MALAYSIA
Unit F01, Medini 7, Persiaran
Medini Sentral 5, Bandar Medini
Iskandar, 79250 Iskandar Puteri,
Johor, Malaysia

SINGAPORE
Capita Spring, Level 21, 88
Market Street, Singapore,
048948

AUSTRALIA
805/220 Collins Street,
Melbourne, Victoria, 3000

INDIA
Urban Vault No 761, 4th
Floor, 19th Main Road,
Sector 3 HSR Layout,
Bangalore, 560102